



Flood Watch This Weekend

February 14, 2025
3:53 AM

Flood Watch Details



In effect early Saturday through midday Sunday.

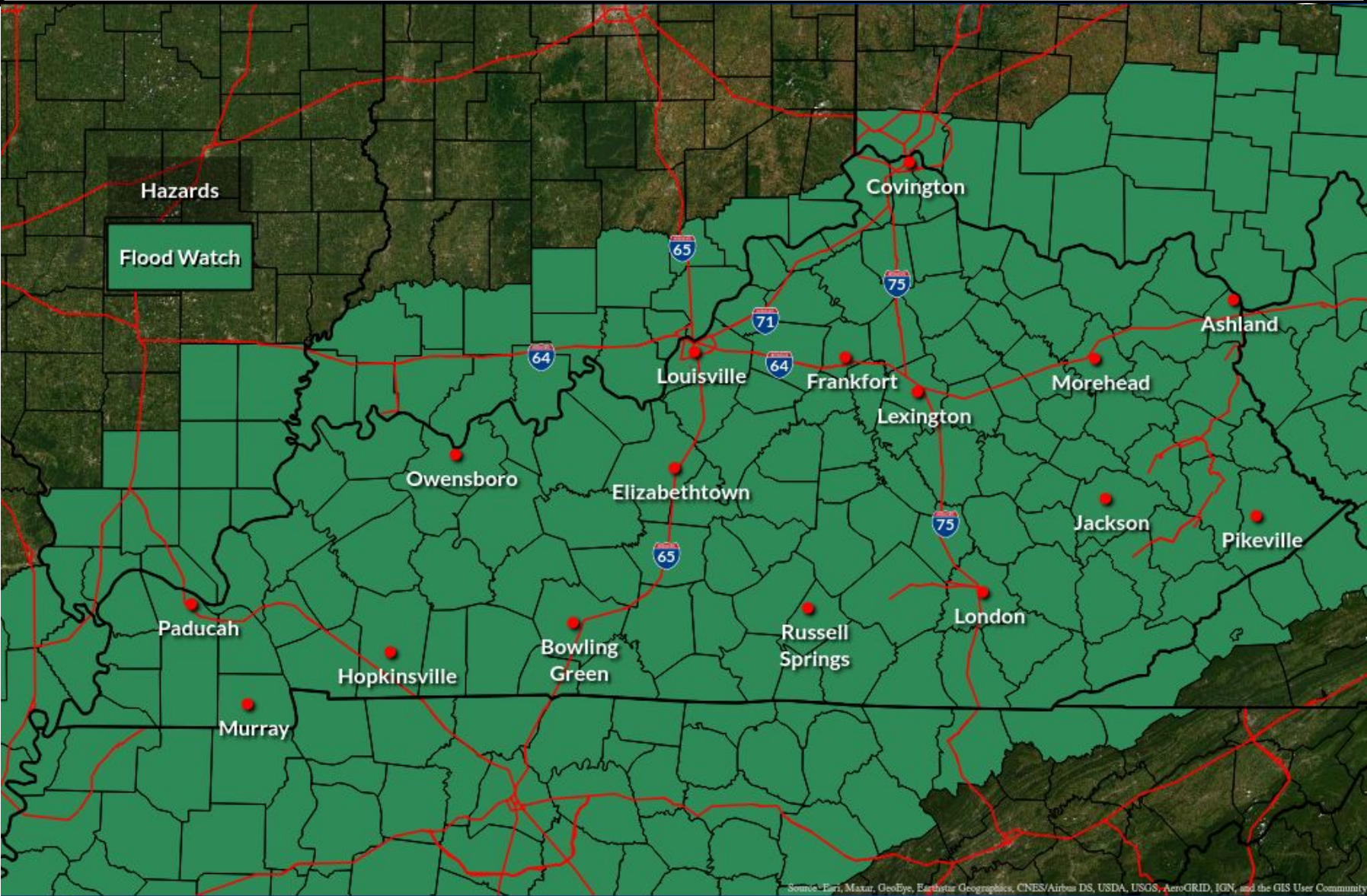


2-5+ inches of new rainfall combined with previous heavy rainfall over the past several days will result in flooding in portions of the watch area.



Significant flooding is possible including **widespread areal, river, and isolated flash flooding**

Flood Watch - Expanded Slightly North



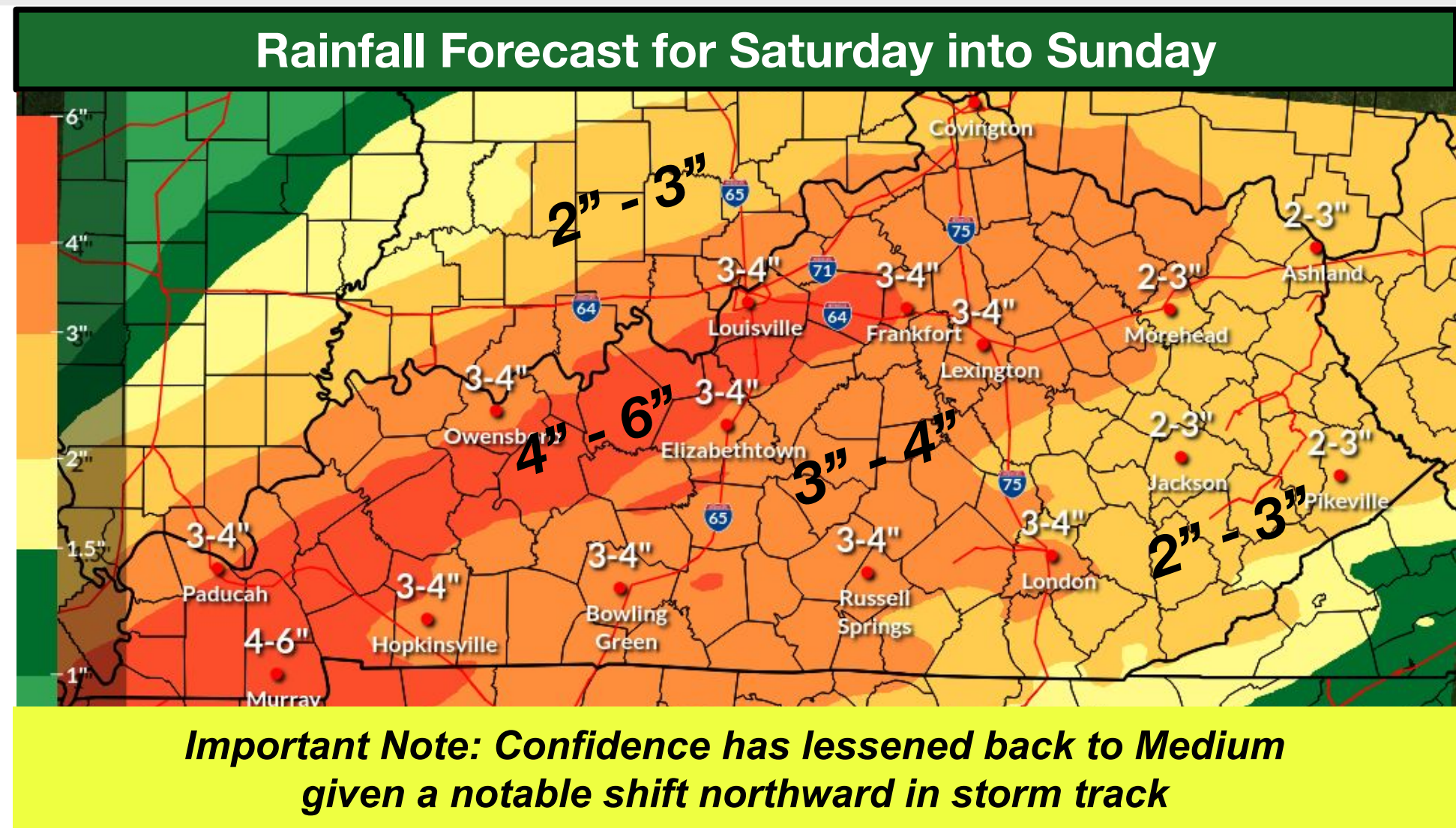


Rainfall Through the Weekend

February 14, 2025
3:53 AM

Key Messages

- Widespread rain arriving before daybreak Saturday, lasting through midday Sunday.
- Rain will be moderate to heavy at times, especially Saturday afternoon - Saturday night.
- Amounts will range from **2 to 5+ inches**. Locally higher amounts.
- Significant flooding including **areal, river, and isolated flash flooding** are possible where the heaviest rain falls.



Confidence in Rainfall Amounts

Low

Medium

High



National Oceanic and
Atmospheric Administration
U.S. Department of Commerce

National Weather Service
Louisville, KY



River Forecasts

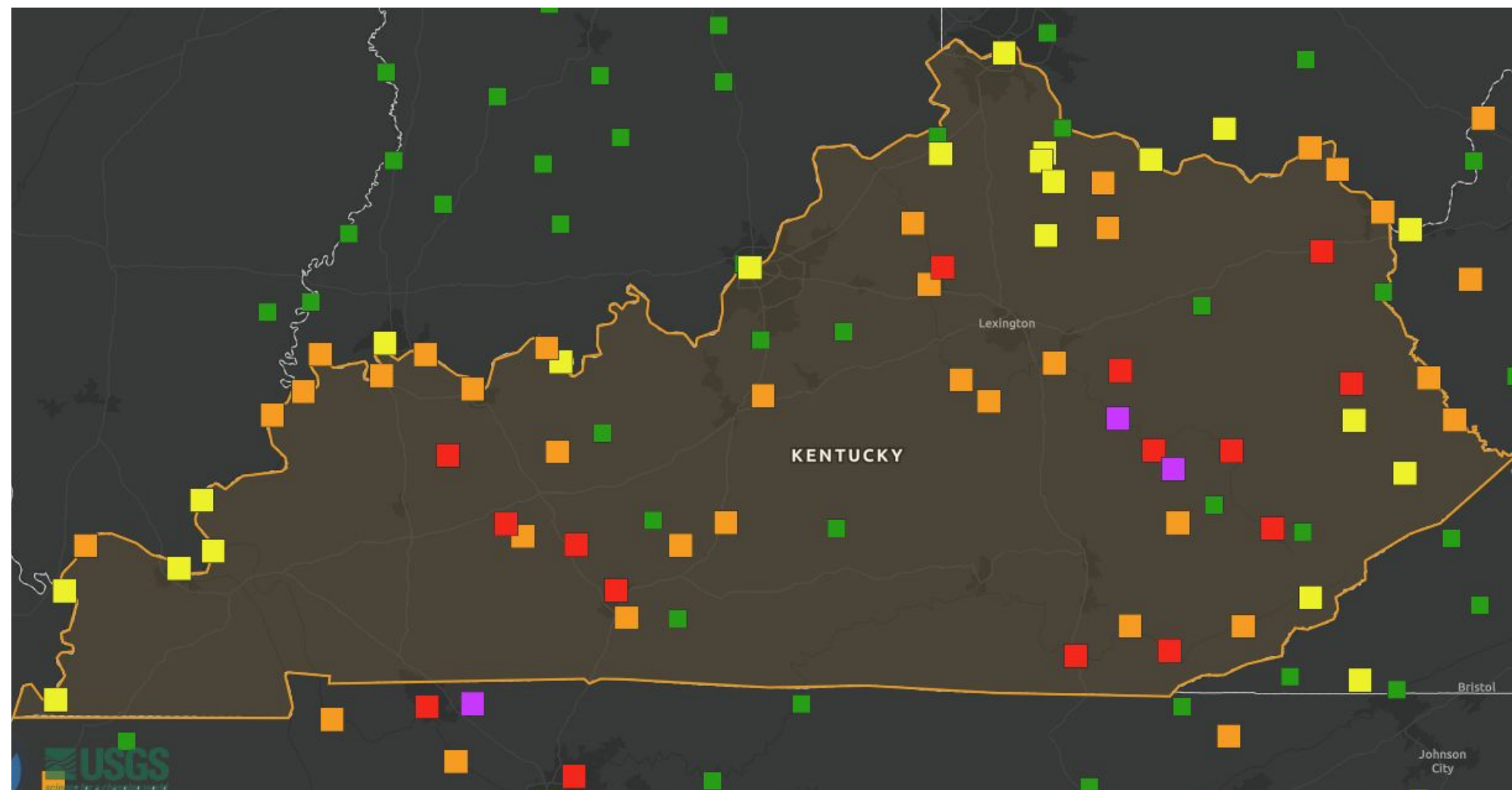
Through Sunday, February 16th

February 14, 2025

3:53 AM

Key Messages

- River Flooding is very likely this Weekend through Next Week
 - Widespread **Minor-Moderate** River Flooding
 - Isolated **Major** River Flooding (Eastern KY)
- Most at Risk for **Moderate+ Flooding**:
 - Kentucky R.
 - Rolling Fork R.
 - Green R.
 - Rough R.



Confidence in River Flooding

Low

Medium

High



National Weather Service
Louisville, KY



National Oceanic and
Atmospheric Administration
U.S. Department of Commerce



River Flood Timing (EST)

February 14, 2025
3:53 AM

	Saturday	Sunday	Monday	Tuesday	Wednesday	Thursday	Friday
Green							
Kentucky							
Licking							
Rolling Fork							
Rough							

Major Flooding

Moderate Flooding

Minor Flooding

Near Flood Stage

No Flooding

Confidence in Timing

LowMediumHigh



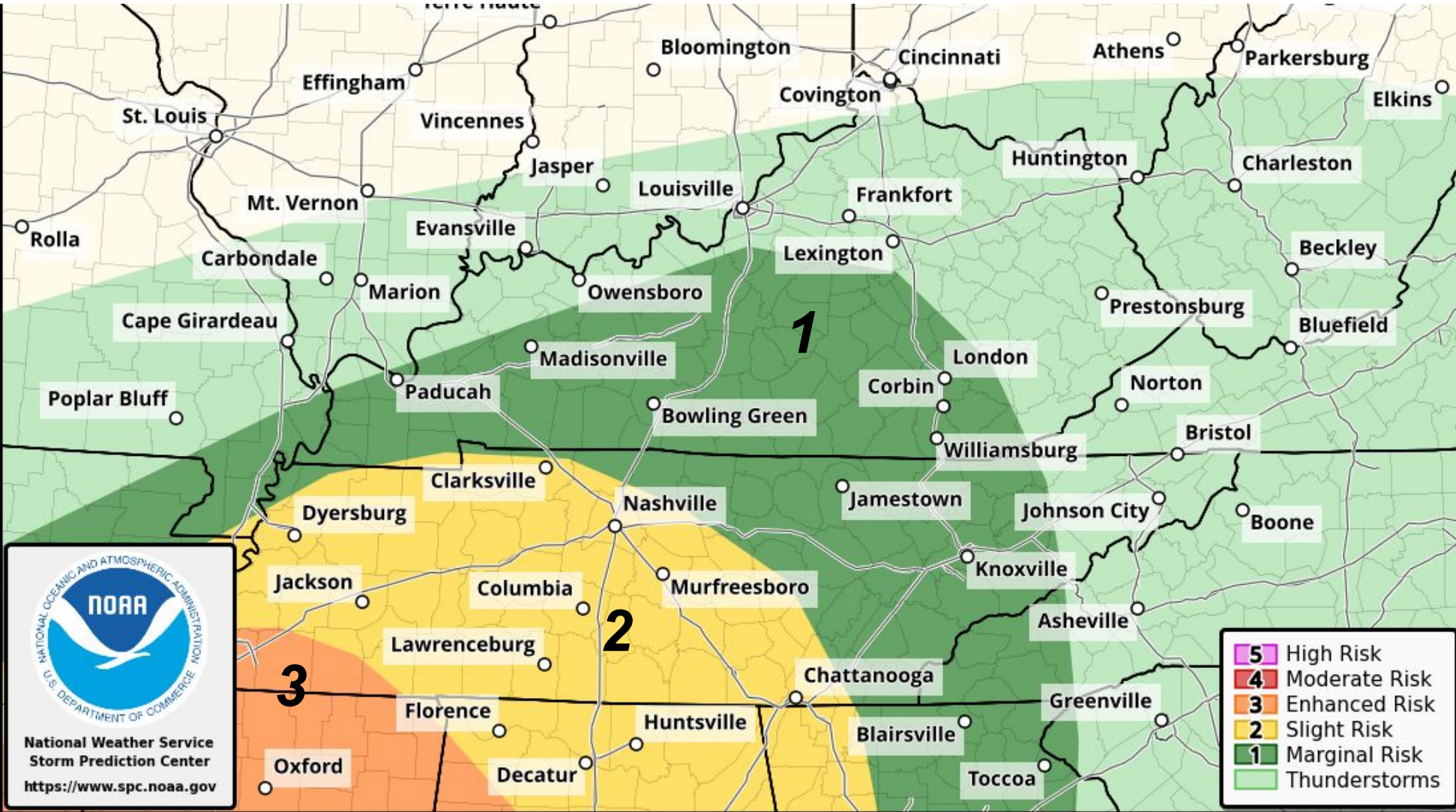


Severe Weather Possible Later Saturday

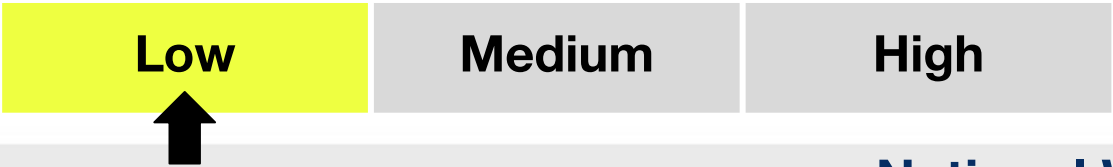
February 14, 2025
3:53 AM

Key Messages

- A low confidence threat for severe weather will exist Saturday evening into Saturday night
- **IF** the threat does materialize, then **localized damaging winds, and a brief spin-up tornado** will be possible
- The isolated Flash Flooding threat will go up with rounds of heavier rainfall/thunderstorms Saturday evening and night



Confidence in Severe Weather





Now Is the Time to Prepare

- Create a communications plan with your family and friends.
- Have enough food, water, and medicine on hand to last you at least 3 days.
- Know your flooding risk.
- Prepare your home if you live in an area prone to river flooding or flash flooding.
- Prepare your family and pets; do not wait until the last moment to gather the essentials for yourself, your family and your pets if you must evacuate.
- Make sure your cell phone and portable radios are fully charged in case of power loss or evacuation.

SAFETY TIPS

DURING THE FLOOD


Listen to authorities for information and instructions on potential evacuations and risks.

Avoid driving through flooded roads and never drive around barricades.

Do not walk, swim, or drive through flood waters which can contain dangerous debris and be contaminated. Underground or downed power lines can also electrically charge the water.

Stay off bridges over fast-moving water.

Be aware of the risk of electrocution. Do not touch electrical equipment if it is wet or if you are standing in water.

 NATIONAL WEATHER SERVICE
OCEANIC AND ATMOSPHERIC ADMINISTRATION

SAFETY TIPS FOR

AFTER THE FLOOD


Listen to authorities for information and instructions. Return home only when authorities say it is safe.

Avoid driving through flooded roads.

Be aware of the risk of electrocution. Do not touch electrical equipment if it is wet or if you are standing in water.

Avoid wading in floodwater, which can contain dangerous debris and be contaminated. Underground or downed power lines can also electrically charge the water.

Use a generator or other gasoline-powered machinery **ONLY** outdoors and away from windows.

 NATIONAL WEATHER SERVICE
OCEANIC AND ATMOSPHERIC ADMINISTRATION



HELPING OTHERS: **FLOODING**



Connect with your neighbors about local flood risks and planning needs



If flooding is expected, help others elevate and protect their belongings



After storms, check on neighbors and keep others out of floodwater



weather.gov





Vehicle Safety



Don't underestimate the power of water!



6 inches of fast-moving water can knock over and carry away an adult.

12 inches of fast-moving water can carry away a small car.

18-24 inches of fast-moving water can carry away most large SUVs, vans and trucks.

