

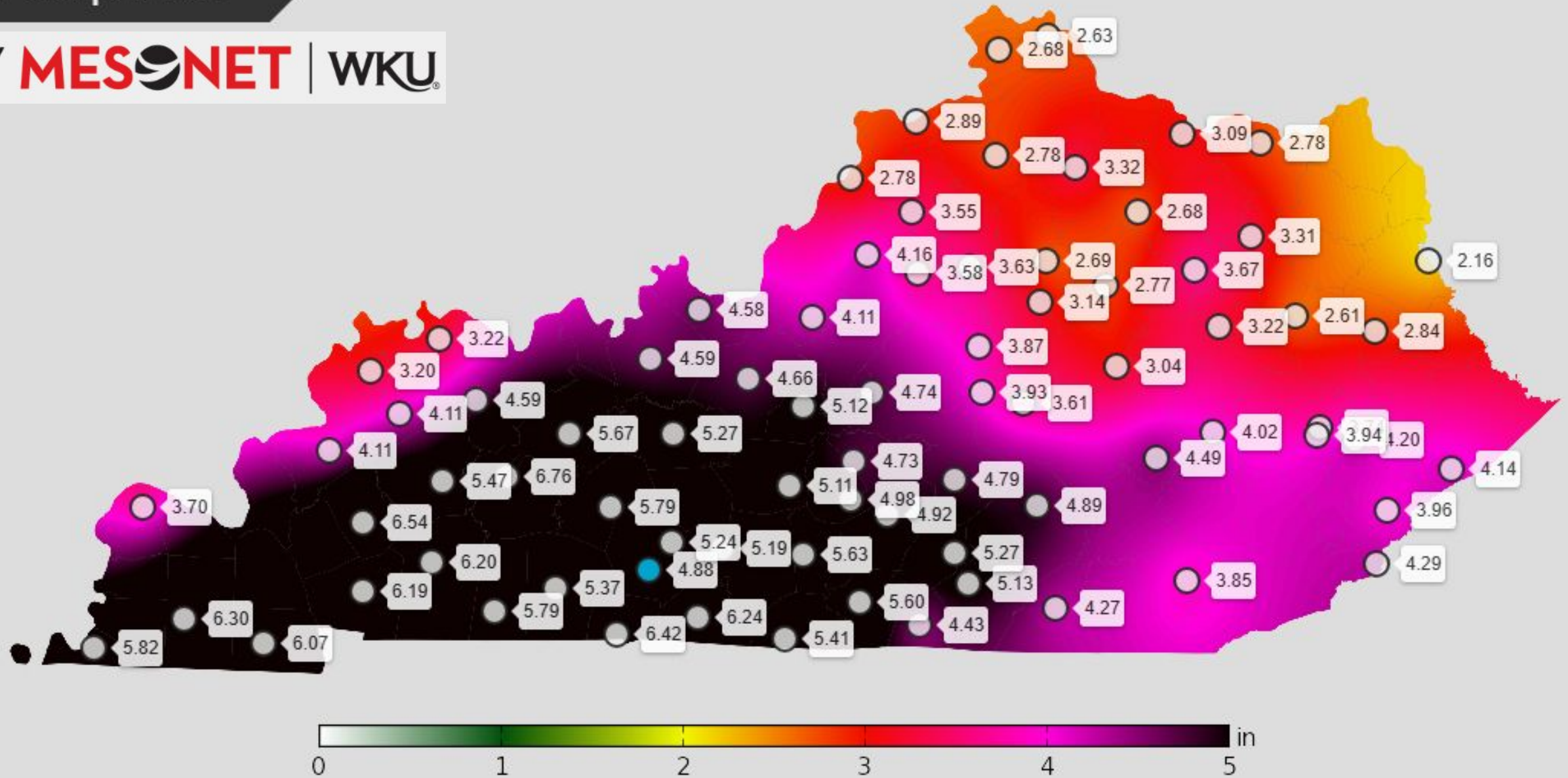


# February 15-16 Rainfall Totals

February 17, 2025  
6:30 AM

Last 48 Hour Precipitation

KENTUCKY MESONET | WKU





## Key Facts - February 15-16 Flooding

- **Daily record rainfalls set at Frankfort, Paducah, Bowling Green, London, and Jackson, KY**
- **Kentucky River at Booneville saw its 3rd highest all time crest**
  - **Most of the Kentucky River crests across eastern and central KY are top 10 all time**
- **Major flooding observed or forecast on portions of the Green, Rolling Fork, and Kentucky Rivers**
- **Flood Watch was issued around 3 AM Thursday morning for virtually the entire state of KY, roughly 48 hours before heavy rainfall began**



Flooding near the NWS office in Jackson, KY (February 16, 2025)



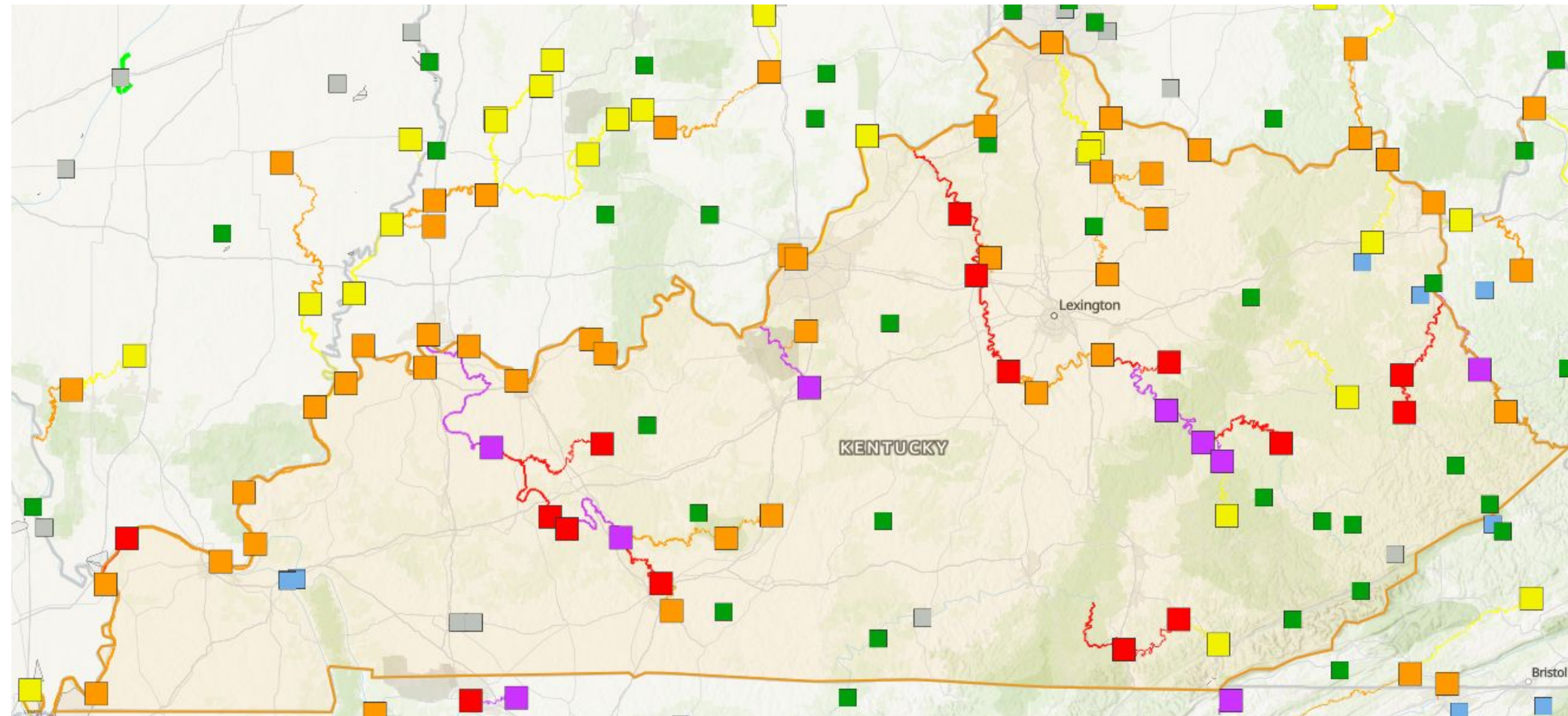
## Key Messages

- **River Flooding This Week**

- Widespread **Minor-Moderate** River Flooding
- Isolated **Major** River Flooding

- **Most Impacted River Basins**

- **Kentucky**
- **Rolling Fork**
- **Green**



# NEVER DRIVE AROUND BARRICADES



Most flood fatalities occur in vehicles



Even when the water recedes, the ground may be unstable



You don't know how deep the water is

[weather.gov](https://www.weather.gov)





# Impactful Winter Storm Arrives Tuesday

February 17, 2025  
6:30 AM

## Winter Storm Watch

- Heavy snow possible. Total snow accumulations between 2-6 inches.

### When

- From Tuesday through Wednesday night

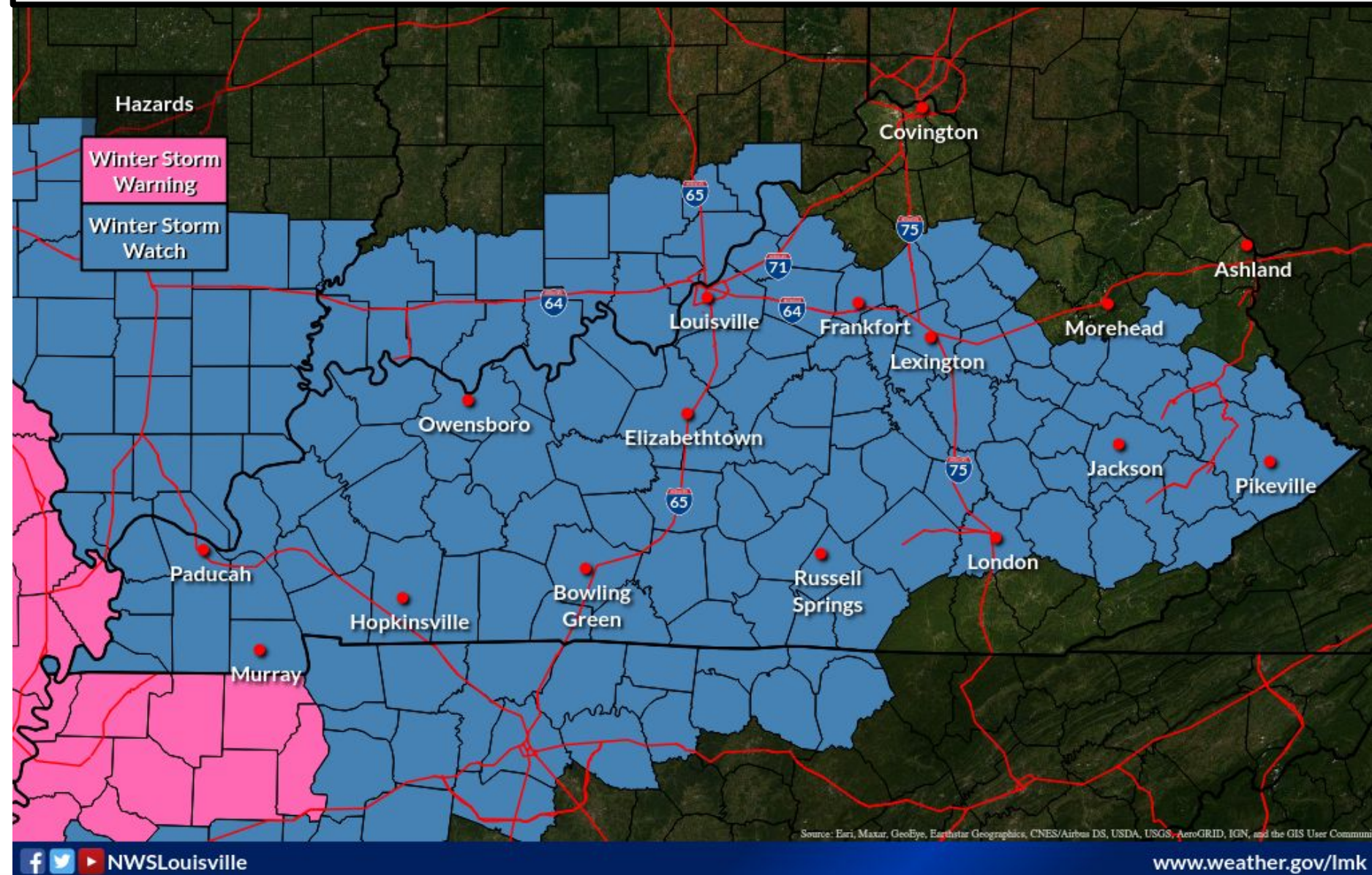
### Impacts

- Plan on slick road conditions.
- Hazardous conditions will negatively impact the Wednesday morning commute.

### Uncertainties

- Where the heaviest snow will occur
- What the high-end amounts will be

## Latest Winter Weather Headlines





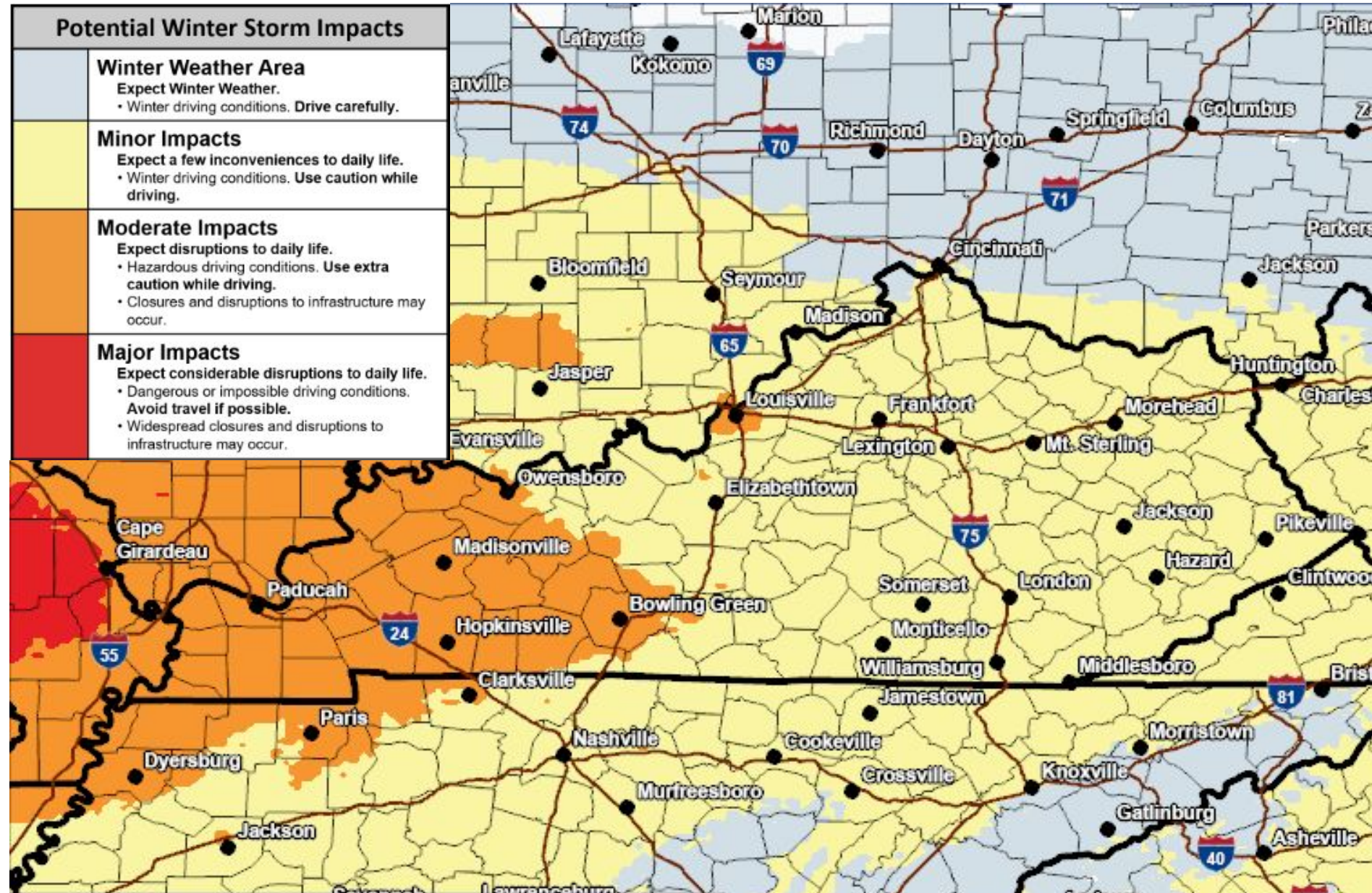
# Potential Winter Storm Impacts

February 17, 2025  
6:30 AM

## Minor to Moderate Impacts from Accumulating Snow

### Key Messages

- Moderate to heavy snowfall will lead to roads becoming snow covered Tuesday and Wednesday.
- Minor to moderate winter weather impacts to be expected.
- Hazardous travel conditions due to slick roads and poor visibility are expected where the heaviest snow falls. Negative impacts to Wednesday morning commute.
- Disruptions to recovery efforts from the floods.



### Confidence in Winter Impacts

Low

Medium

High





# Expected Snowfall Forecast

February 17, 2025  
6:30 AM

## Key Messages

- A broad swath of 2-5 inches of snow possible across the area, with potential for a corridor of heavier snow possible somewhere south of I-64.
- Snow is expected to begin accumulating in western Kentucky on Tuesday, and is expected to end by Thursday morning in eastern Kentucky.

## Confidence in Snowfall Amounts

Low

Medium

High

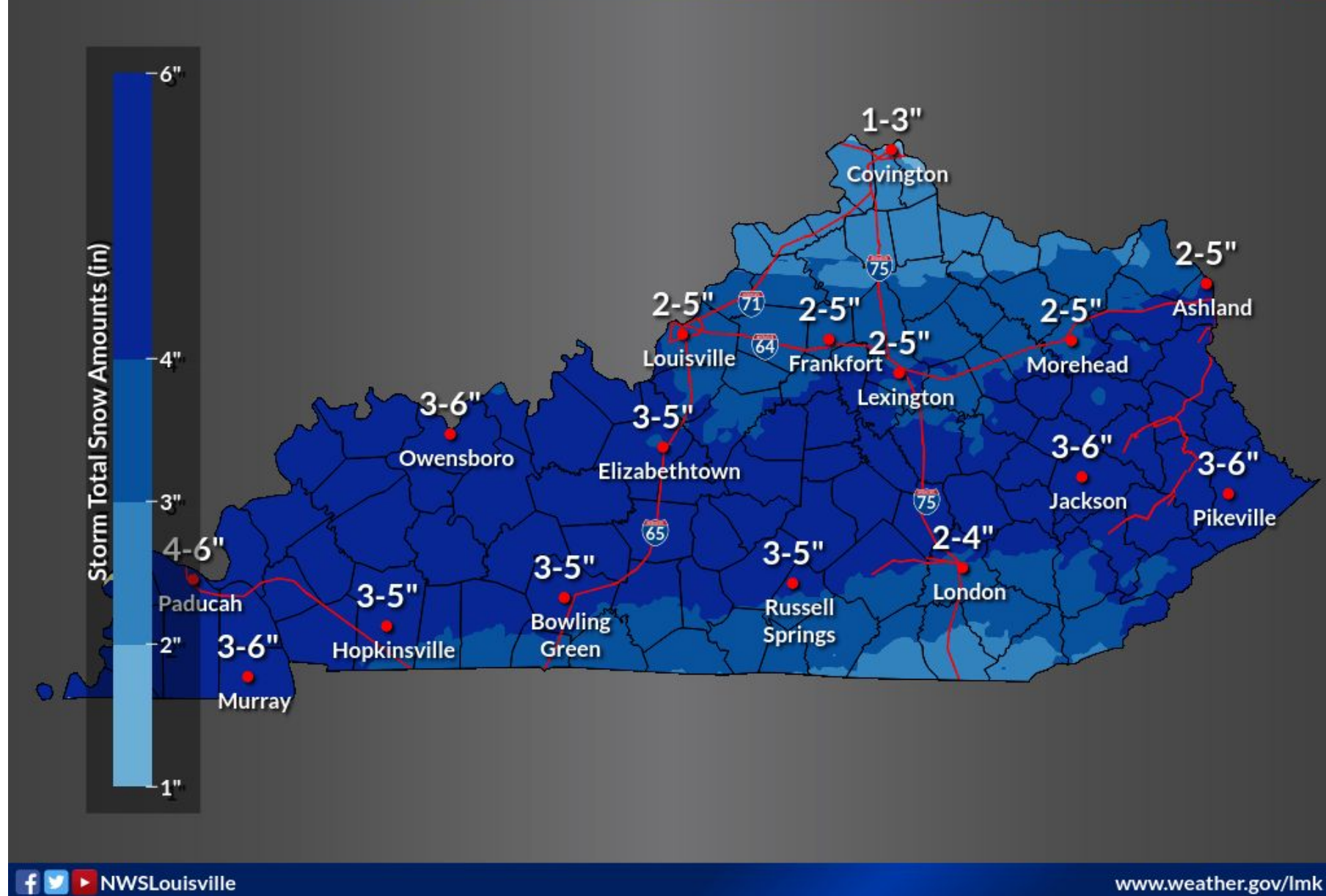


## Expected Snowfall - Official NWS Forecast

Valid Mon 7:00AM through Thu 7:00AM EST

Weather Forecast Office  
Louisville, KY

Issued Feb 17, 2025 4:16 AM EST



NWSLouisville

[www.weather.gov/lmk](http://www.weather.gov/lmk)



National Oceanic and Atmospheric Administration  
U.S. Department of Commerce

National Weather Service  
Louisville, KY



# Ranges in Potential Snowfall Amounts

February 17, 2025  
6:30 AM

Amounts Subject To Change In Later Forecasts

## Reasonable Best Case Snowfall

## Reasonable Worst Case Snowfall

Low End Amount - 90% Chance of Higher Snow

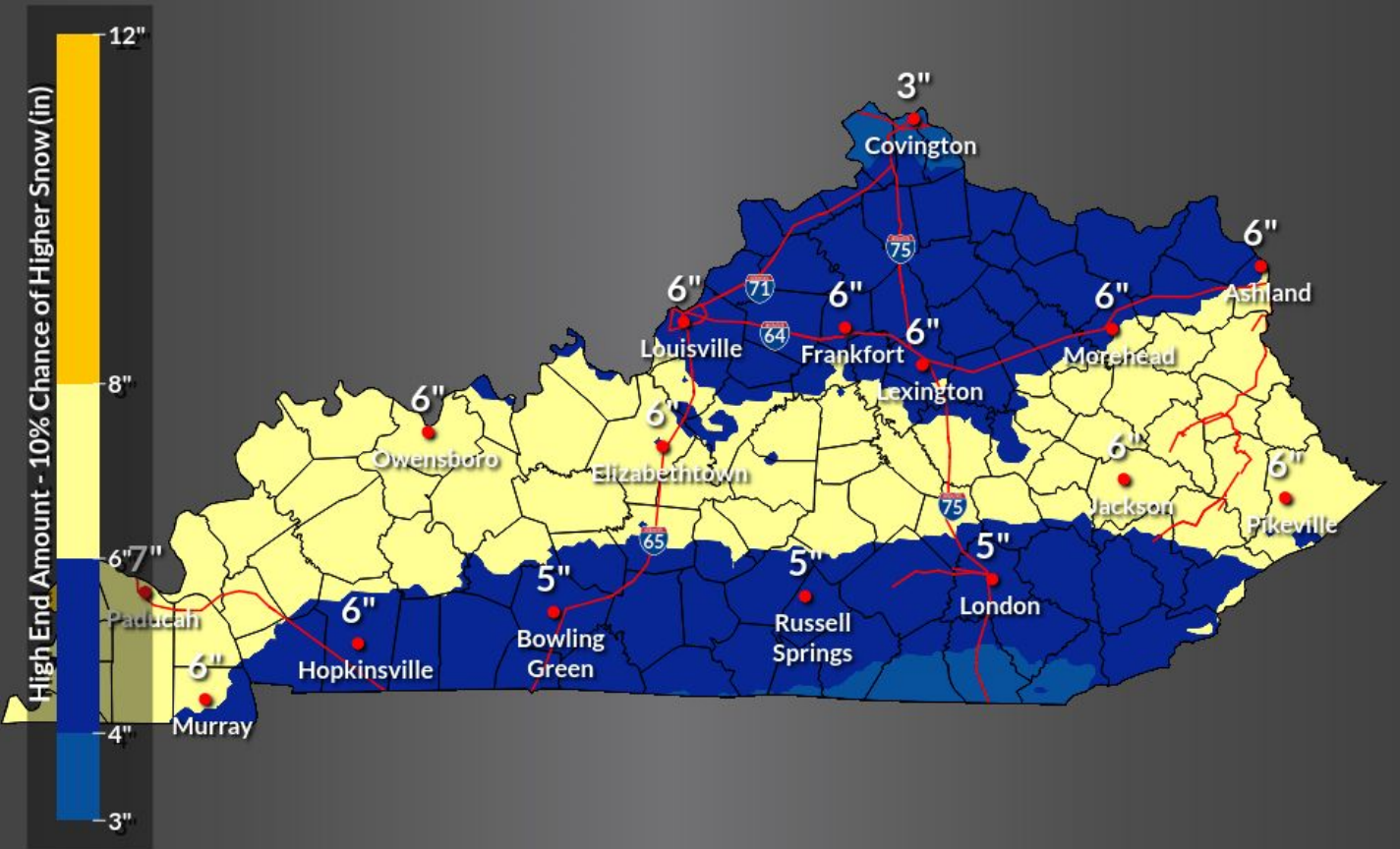
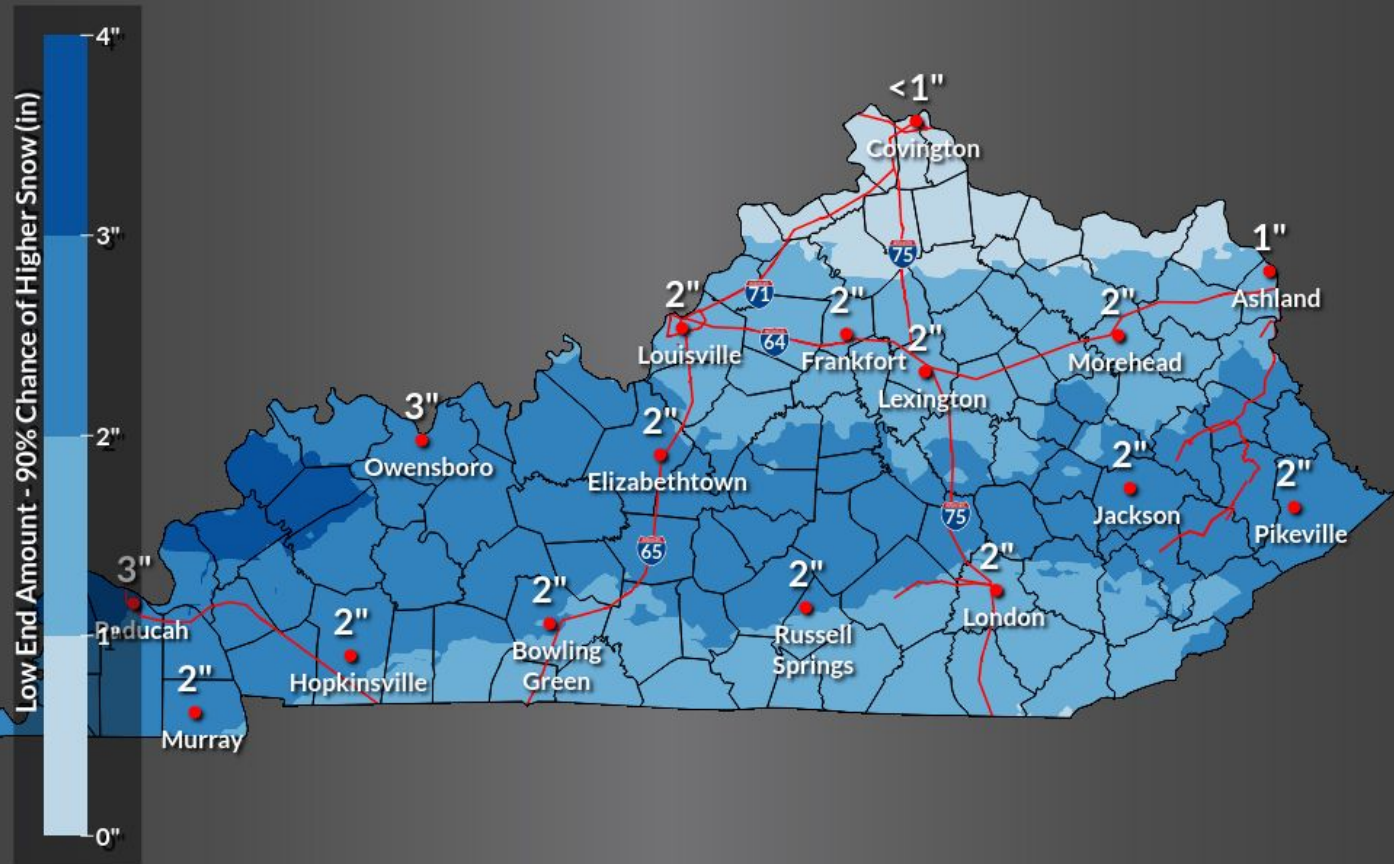
High End Amount - 10% Chance of Higher Snow

Valid Mon 7:00AM through Thu 7:00AM EST

Weather Forecast Office  
Louisville, KY  
Issued Feb 17, 2025 4:16 AM EST



Weather Forecast Office  
Louisville, KY  
Issued Feb 17, 2025 4:16 AM EST



NWSLouisville

www.weather.gov/lmk

NWSLouisville

www.weather.gov/lmk



# Winter Storm Planning Timeline

## A few days out

*If the forecast calls for winter weather, start preparing now.*



Have emergency supplies for your home & car



Check your smoke and carbon monoxide detectors



Replenish fuel for your car and heating sources

## The day before

*Forecast accuracy continues to improve, so keep checking the latest.*



Adjust plans



Have multiple ways to receive Warnings



Bring pets indoors and ensure they have water

## During & After

*Remain vigilant and stay informed. Drive only if necessary.*



Check on neighbors and family



Properly ventilate emergency heat sources



Keep generators at least 20 feet from your home



Take it easy when shoveling